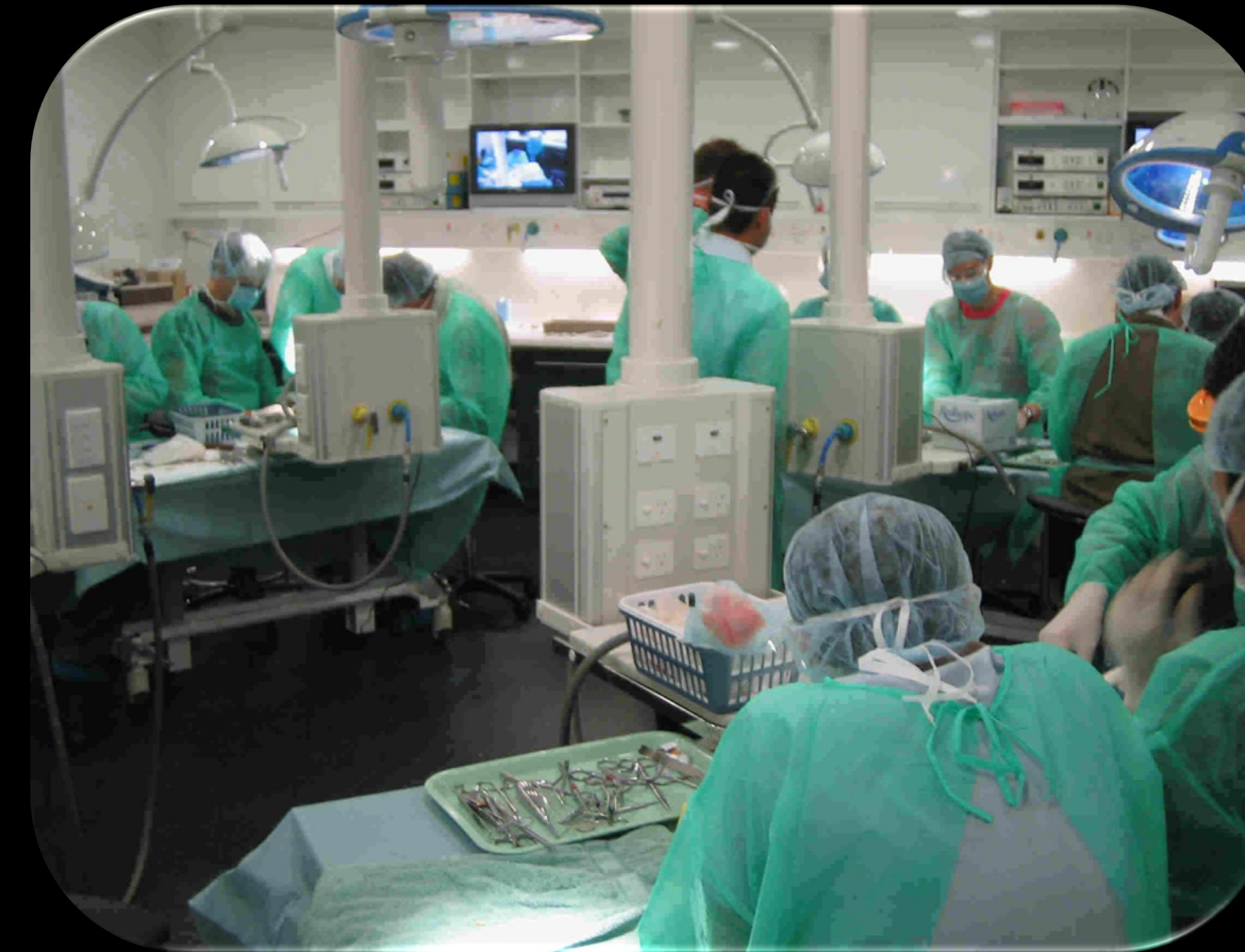
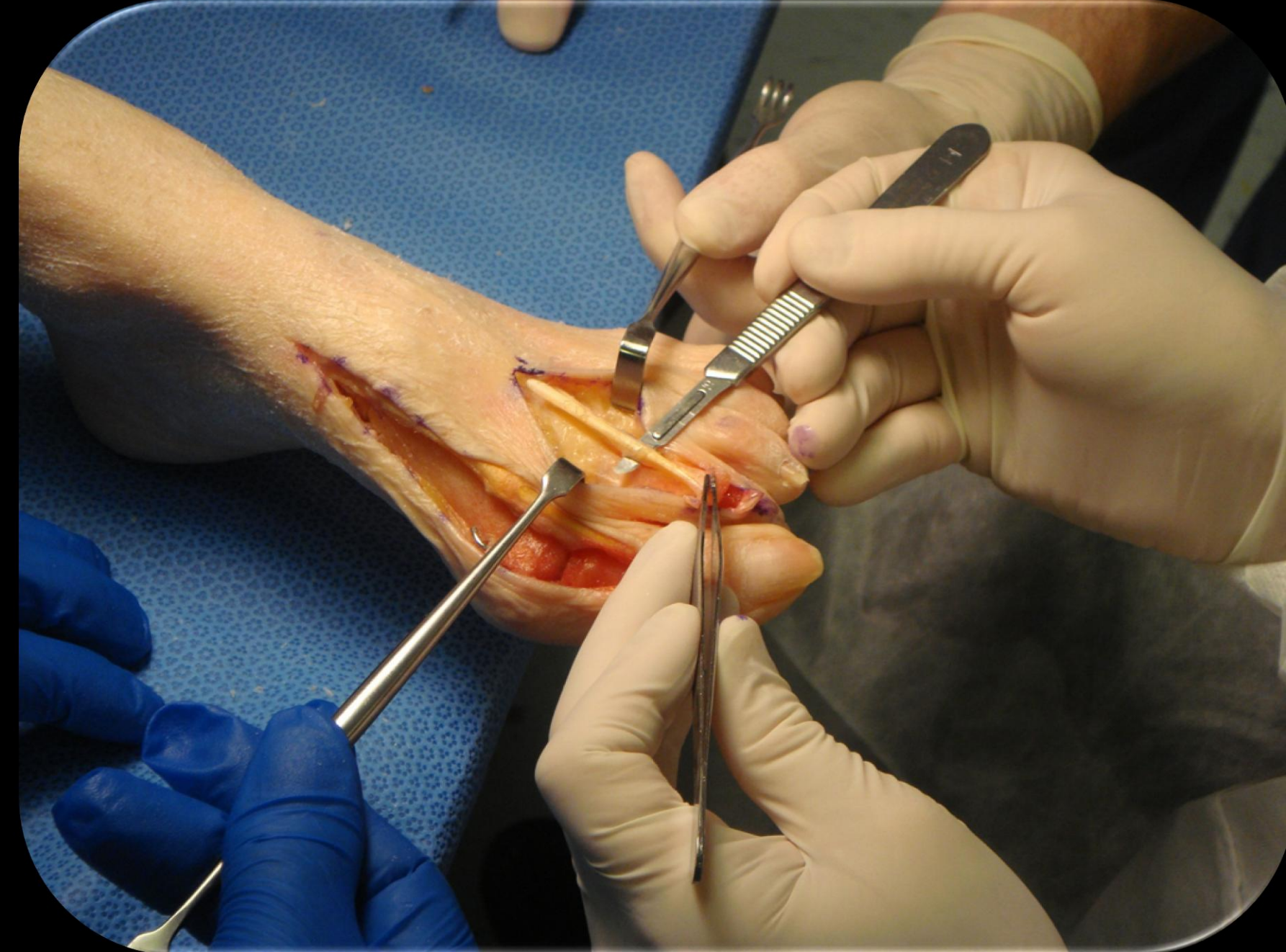
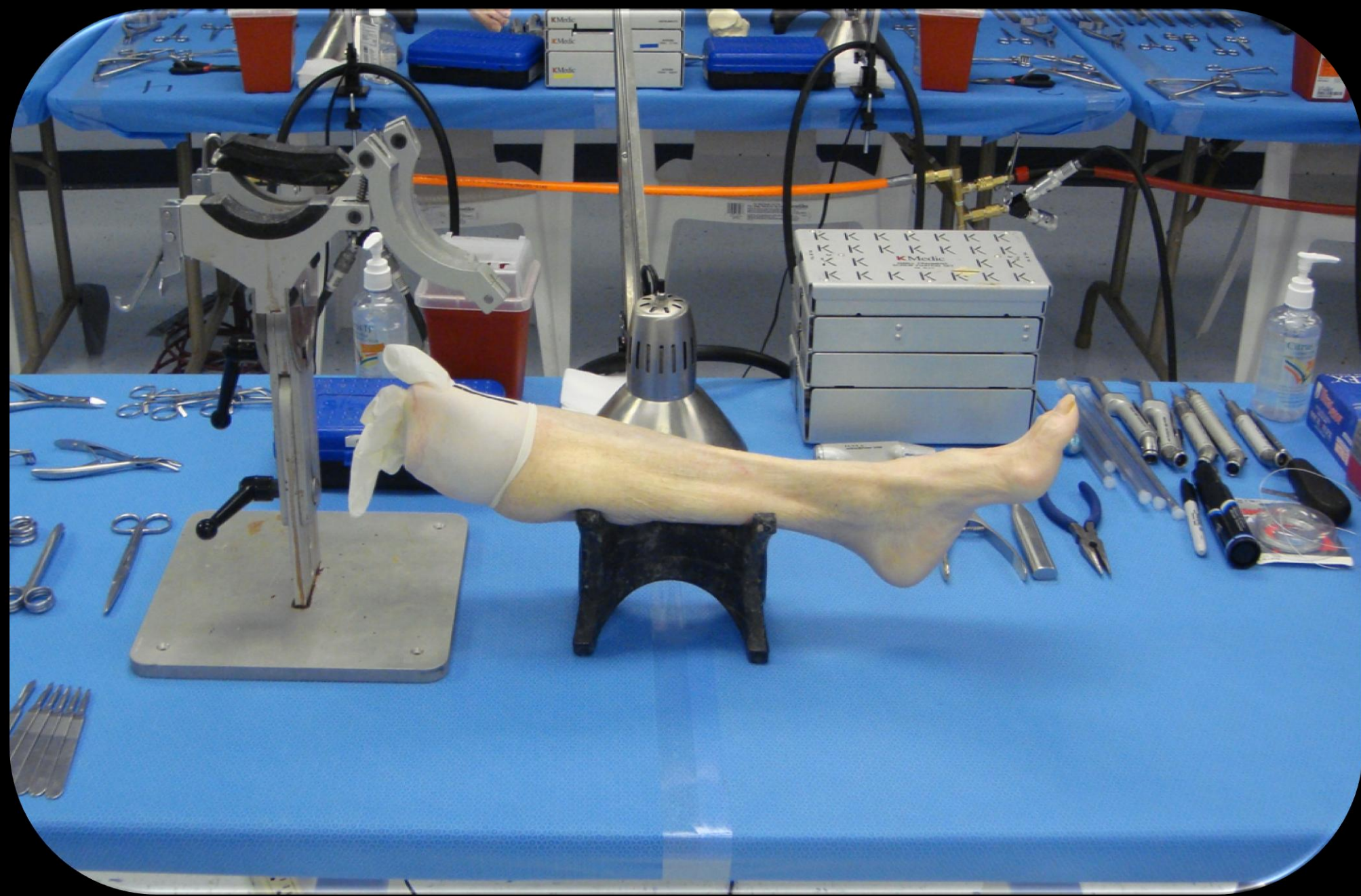




CPSM

The Centre for  
Podiatric Surgery  
& Medicine

# HANDS-ON FRESH FROZEN CADAVER DISSECTION ANATOMY & PATHOLOGY WORKSHOP



**BEST WAY TO GAIN SUPERIOR UNDERSTANDING OF FOOT & ANKLE DISORDERS**

## 1<sup>ST</sup> MTP JOINT

Hallux Valgus  
Hallux Rigidus  
Sesamoid Dysfunction

## LESSER DIGITS & MTP JOINTS

Freiberg's infraction  
Hammertoe/ mallet toe  
Plantar plate rupture

## NERVES

Interdigital neuroma  
Posterior tibial nerve entrapment  
Other symptomatic nerves

## POSTERIOR TIBIAL TENDON

Dysfunction  
Flat feet

## ANKLE & SUBTALAR JOINT

Lateral instability  
Osteo-chondral Defects  
Ankle equinus

## ACHILLES TENDON

Tendinosis  
Calf injuries

## PLANTAR FASCIA

Fasciitis, fasciosis  
Muscle attachments to heel  
Common causes of heel pain

## TENDON DISORDERS

Peroneus Longus & Brevis  
Tendon injuries i.e. Tears  
Pathophysiology

**FREE  
DISSECTION  
TIME**

**ALL LEVELS  
ARE  
WELCOME**

**RARE  
OPPORTUNITY**

*DISTINGUISHED TEAM  
HANDS ON EXPERIENCE*

02-93628838

[WWW.CPSMED.COM.AU](http://WWW.CPSMED.COM.AU)